



# New Lunchtime Expectations



**Old practice - Separate areas and separate staff**



**Now** - Everyone all together in all of this space!

**At lunch you will go out of the classroom/cloakroom doors – not the corridors**



# One Dining



# Hall



**This will be in the Junior building.**

# Early Years

(11:45)

## Year 1

(12:00 drop off and lunch starts)

**Go straight to the Junior Hall to eat.**

**As soon as you are finished, leave  
and put your boots on if it is wet.**

# Year 2, 3, 4, 5 and 6

## Go straight outside to play



# Years 2,3,4,5 and 6

**Go to the dining hall  
when you hear the bell  
when your year group is  
called.**



# Eating

**Stay in the dining hall until you have eaten all your lunch or you are full up.**

**You can stay as little or long as you need.**

# Eating a packed lunch

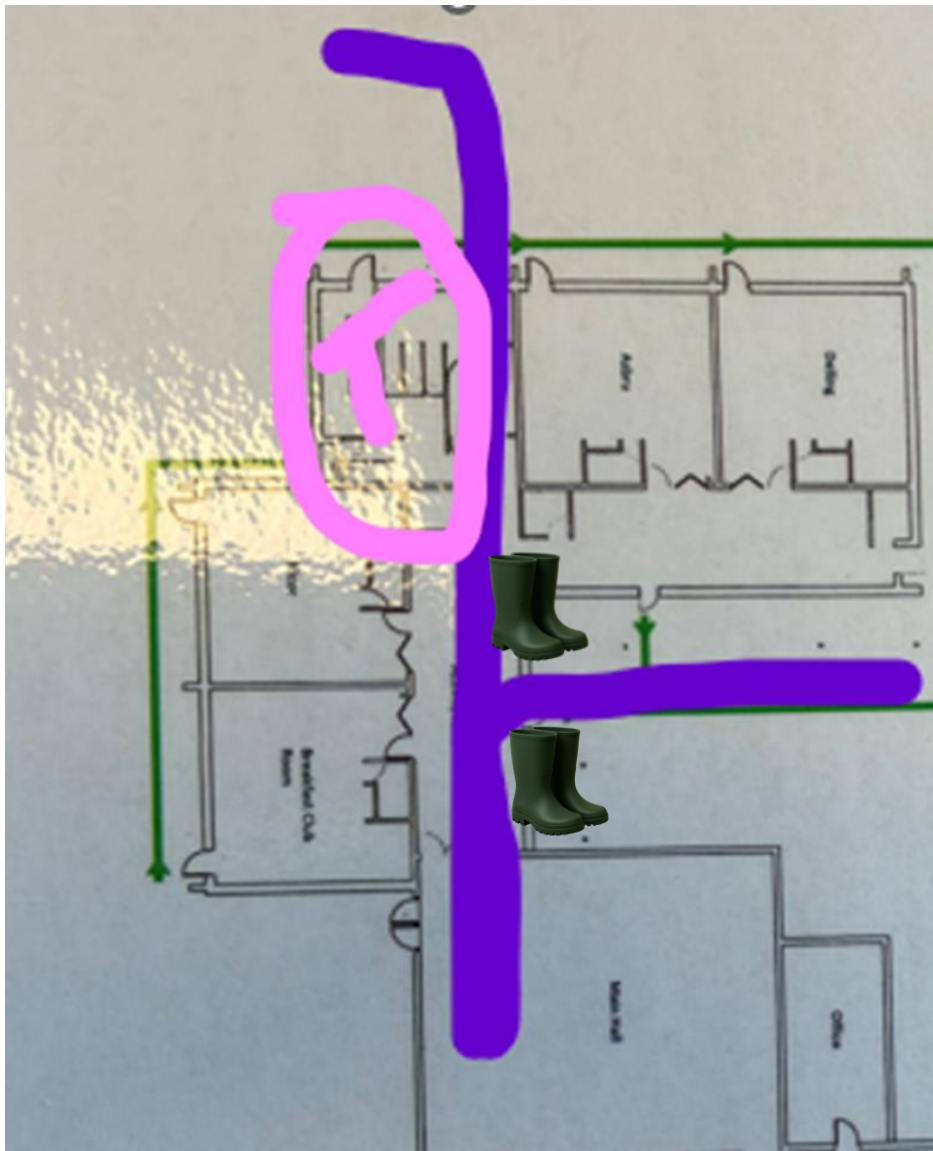
**If you have a packed lunch, you have the option to eat outside.**

**Think about the weather.**

# Not finished yet?

**If your friends have finished and you have not, arrange a place to meet when you are finished.**

**Only leave when you have finished or are full up.**



**If you are wearing wellies, you will take them off in the corridor**

**When finished leave out of the hall door**



**Only go EVERYWHERE if you have wellingtons during winter.**

# Wellington Boots

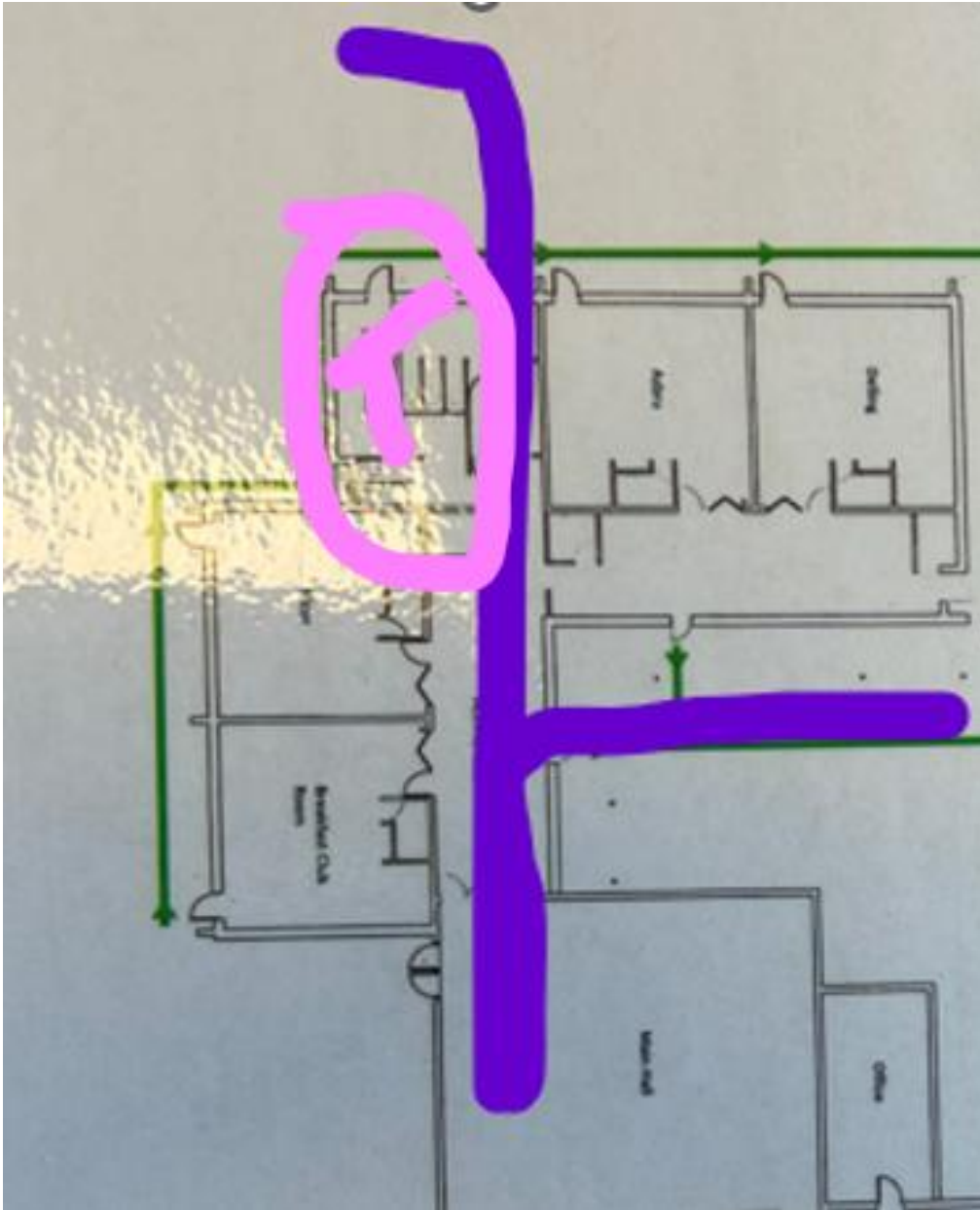


**You must leave from your  
classroom or cloakroom  
doors so you can change into  
your wellington boots**



## **Welly Day – No Welly Day**

**Welly day means it is wet and you can only go on the field if you are wearing wellington boots. No wellingtons means you can only go on the tarmac.**



**Toilet passes now stopped.**

**You can go to the toilets at anytime without asking**



# Zones

- Zone 1 –Wheels
- Zone 2 – Calm/  
Creative
- Zone 3 - Nature
- Zone 4 - Loose  
parts
- Zone 5 – Small  
world
- Zone 6 - Expressive

# Zone 1 - Wheels



# Zone 2 – Calm/creative



# Zone 3 – Nature



# Zone 4 – Loose parts



# Zone 5 – Small world



# Zone 6 – Expressive





**5 minutes before the end of lunch, 'tidy up time' will be called.**

**EVERYONE will pick up something that is next to them to tidy up even if you have not played with it.**



**The bell will ring and  
'time for learning' will  
be called.**

**You will go to your classroom outside  
door, change into your shoes and go  
straight in.**



# New Lunchtime Expectations